



UNIVERSITY OF
LEICESTER

www.le.ac.uk



Student guide to undergraduate assessment and award

For students studying year 1 from
September 2025 or later





Contents

Glossary	3
Undergraduate assessment and award	4
Modules	6
Assessment	7
Progression	8
Progression process	9
Compensated Pass	10
Progression after Re-assessment	11
Award and classification	13

Glossary

Term	Definition
Assessment	An assessment for a module that is listed on the module specification
Award	The qualification a student obtains at the end of their studies
Bachelors degree	A degree awarded to a student following the successful completion of an undergraduate course at a university.
Board of Examiners	A formal group of academic staff which makes the decision of whether a student can proceed to the next year of study or be awarded their degree.
Classification	A grade used to indicate how well a student has performed overall in their degree.
Compensation	A method by which the University awards credits for a module in which the pass mark was not achieved, so that the student can progress their studies.
Credit Weighted Average (CWA)	A single mark that reflects a student's performance across a range of modules, calculated by combining all of the marks for the relevant modules, weighted by their overall credit weighting.
Integrated Masters degree	A four-year course combining three years of undergraduate study and a single year of postgraduate (Masters) level study. At the end of the course students get a single degree, at masters level.
Level	The year of your course, for example year 1
Module	A self-contained component of a course, with its own intended learning outcomes and assessments. Degree courses are made up of a number of modules which when combined create a course.
Proceed and Re-sit	A decision that may be taken by a Board of Examiners when a student has not passed all of the modules for the year. A student is permitted to proceed to their next level of study but must re-sit failed assessment at the same time.
Progression	The process by which a Board of Examiners determines whether a student has met the requirements to move from one year of study to another.
Re-assessment	A further attempt at an assessment where the first attempt has been failed. The marks for assessments which are re-assessed will be capped.
Repeat Year	A period of study whereby students repeat the teaching and assessment for the course. No previously achieved credits, attempts, or marks are carried over for the year repeated. Students will attend teaching and take assessments as if for the first time.
Senate Regulation 5	The Regulation, setting the rules for how undergraduate courses are structured, the requirements for students to progress through their course and the requirements to be awarded a degree. Students agree to the rules set out in the regulations when they accept their offer and register with the University.

A full glossary of terms is available [online](#)



Undergraduate assessment and awards

This guide explains the University's regulations on assessment and award for undergraduate students who commenced year 1 in September 2025 or later. The regulation which governs undergraduate assessment is Senate Regulation 5 and can be found at:

www.le.ac.uk/senate-regulations

Undergraduate programmes

Each programme of study leads to an award of the University, for example, BA, BSc, LLB and is made up of a number of modules which are worth a number of credits. More information on modules and credits is given below. You will need to take modules totalling 120 credits for each level of study. For a Bachelors degree you must obtain 360 credits and for an Integrated Masters degree you must obtain 480 credits.

Structure of degrees

Each undergraduate programme is made up of levels. Levels of study are part of a national Framework for Higher

Education Qualifications (FHEQ). As an undergraduate student you will be studying at levels 4, 5 and 6. If you are taking an Integrated Master Degree your final year will be at level 7. For full-time students levels will usually equate to years of study as demonstrated in the table overleaf.

You must meet the threshold to pass each level and proceed to the next. This process is called progression and is explained on pages 11-12.

You must achieve a pass or compensated pass in all the modules on your course in order to achieve your degree. Some courses also have specific requirements for accreditation and may set higher thresholds

You will usually have the opportunity to re-sit assessments that you have failed, but if you do not manage to achieve a pass mark, or compensated pass mark, in all your modules after you have had all your assessment attempts you will not be able to continue with your degree.

	Year 1	Year 2	Year 3	Year 4	Year 5
3 year Bachelors Degree	Level 4	Level 5	Level 6		
4 year Bachelors Degree with a year abroad or in industry	Level 4	Level 5	Year abroad/ in industry	Level 6	
4 year Integrated Masters Degree	Level 4	Level 5	Level 6	Level 7	
5 year Integrated Masters Degree with a year in industry	Level 4	Level 5	Level 6	Year in industry	Level 7

For more information on the requirements to pass a degree, please see [here](#)

If you are studying on a full-time basis you will usually complete each level in one academic year. If you are studying part-time you will study over a longer period, so typically it will take two years to complete each level.



Modules

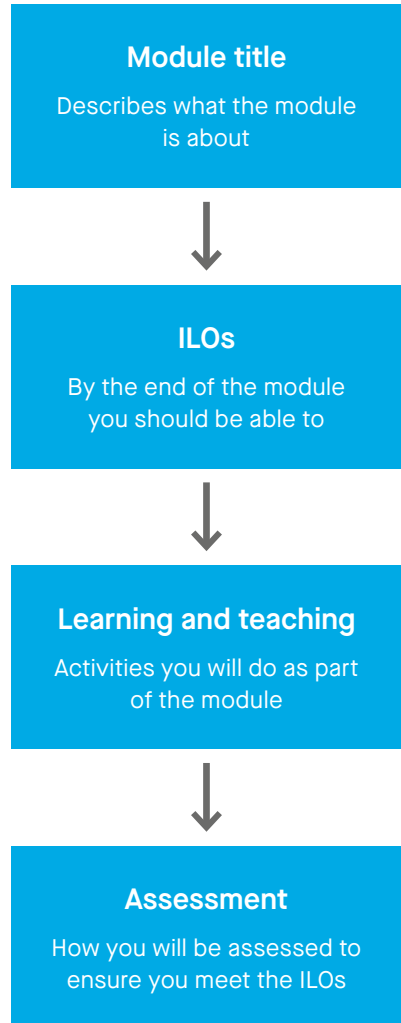
Each programme is broken down into modules. Some modules are core to your programme meaning that you have to take them. Others are optional, where you will choose from the range available for your course.

Each module is worth a number of credits and you will need to take a total of 360 over your programme if you are taking a three year degree or 480 for a four year degree. Most modules will be worth either 15 or 30 credits, but some larger modules such as projects may be worth more credits. The number of credits for each module reflects its workload. Each credit has a notional workload of 10 hours and this includes all teaching and learning events and your own study time, including the time it takes to prepare for and submit assessments.

So for a 30 credit module you should expect to spend 300 hours in total studying for the module (30 credits x 10 hours).

All programmes are designed to enable you to gain specific knowledge and skills which are described in your programme specification as Intended Learning Outcomes (ILOs). Each module also has a module specification which describes its aims and Intended Learning Outcomes along with its associated assessment.

<https://le.ac.uk/study/undergraduates/courses>



Assessment

You will take assessments for each of your modules which will give you the opportunity to demonstrate the knowledge and skills you have learned and ensure you have met the ILOs. Assessment methods and the number of assessments for each module will vary according to the modules you are taking. Details of the assessments that make up your module mark will be given in the relevant module specification. You will also receive more information about them from your school.

The pass mark for individual assessments in years 1 to 3 is 40.00% unless otherwise stated. The pass mark for individual assessments in the final year of an Integrated Masters programme is 50.00%.

The pass mark for modules in years 1 to 3 is 40.00%. The pass mark for modules in the final year of an Integrated Masters programme is 50.00%. Your module mark will be calculated on the basis of the individual assessment marks and their weightings as shown in the module specification. An example is below:

Assessment	Weighting	Mark	Contribution
Coursework	30%	52.00	$0.3 * 52.00 = 15.6$
Presentation	30%	54.00	$0.3 * 54.00 = 16.2$
Exam	40%	61.00	$0.4 * 61.00 = 24.4$



In this example the final module mark would be 56.20% ($15.6 + 16.2 + 24.4$)

Module marks are expressed to two decimal places. They are not rounded further.

Some modules require a minimum mark in individual assessments, so always check with your school.



Progression

At the end of each level of study your marks for each module will be reviewed by a Board of Examiners which will decide if you have met all the requirements to progress to the next level of study or if you need to retake any assessments. This process is called progression.

If you have passed all modules, achieved an overall credit weighted average of at least 40.00% for the level and met any additional specific requirements for your course you will progress to the next level.

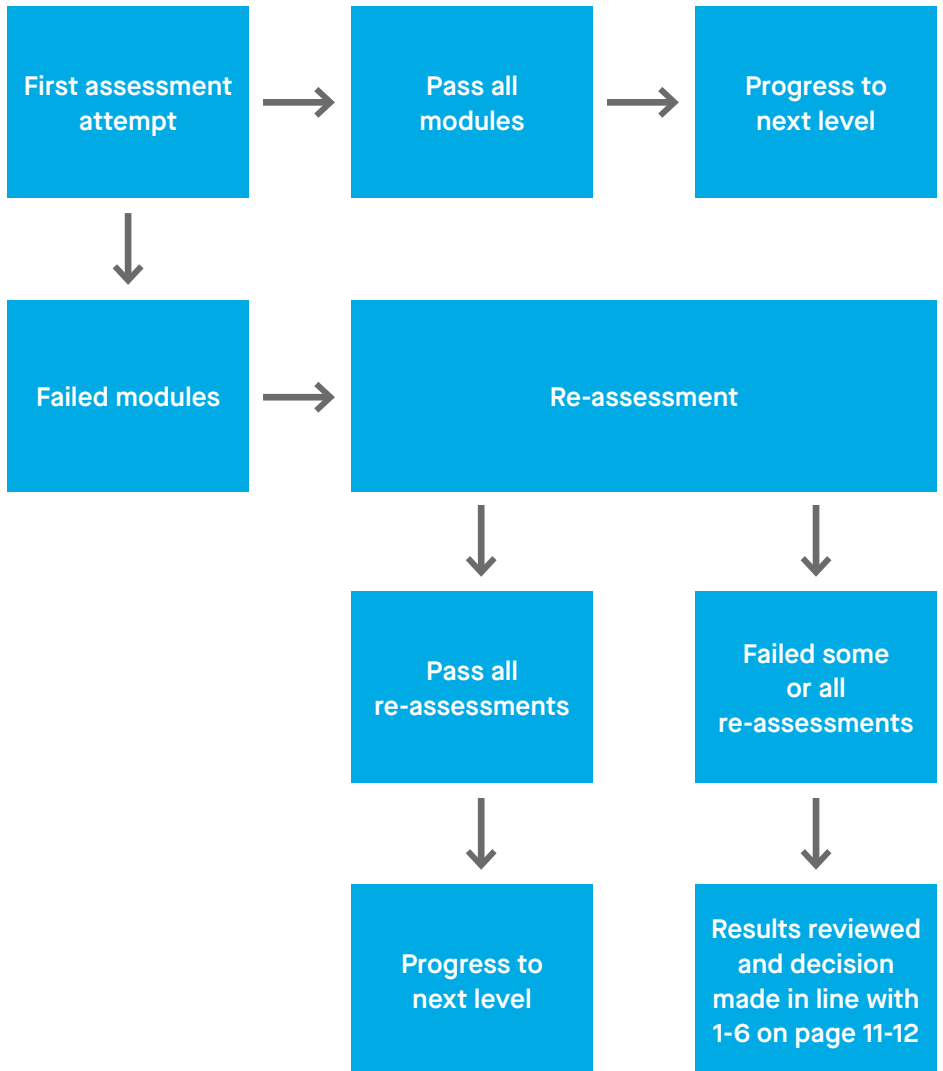
If you have failed modules (achieving a mark below 40.00% or below 50.00% for an integrated masters module) you will be given a further attempt at the

failed assessments from these modules. This is referred to as re-assessment. Re-assessment normally takes place in late July and early August.

The marks for assessments that you are required to retake will be capped at the pass mark, unless you have accepted Mitigating Circumstances that remove the cap.

If you pass your reassessments and meet any programme specific requirements you will progress to the next level. If not, the Board of Examiners will meet again to decide your progression. The diagram on the next page represents typical progression patterns.

Progression process





Compensated Pass

Compensation is a mechanism that allows the University to give students credit for modules where they have not reached the pass mark, on the basis of their wider performance in the year.

If, after you have taken your re-assessments, you have not achieved a pass mark for the module but you have achieved a module mark of between 30.00% and 39.99% you may be eligible for a compensated pass.

To be awarded compensated pass your credit weighted average for the year must be at least 40.00%. You are awarded credits for any modules given a compensated pass. A compensated pass for a module will only be given after you have attempted the re-assessment.

There are limits on the amount of Compensated Pass that you can have in your degree. You can only have a maximum of 60 credits of Compensated Pass across your whole programme, and a maximum of 30 credits in any one year.

If you exceed this amount no more compensation will be given and you may be unable to complete your degree.

Not all modules are available for compensation, often due to external accreditation requirements, so you should be sure to check the specific requirements for your modules with your school.

For more information on Compensated Pass, please see [here](#).

Progression after Re-assessment

If you fail one or more of your reassessments a Board of Examiners will review your results and make a decision on what should happen next. This will depend on the number of credits you have failed, whether or not these are prerequisites (requirements to progress to the next level) and the level of study you have been undertaking.

Full details can be found in Senate Regulation 5 but the following progression decisions will usually apply. Please note that some schools may have additional specific progression requirements, often for external accreditation, so you should be sure to check the specific requirements for your course with your school.

Year 1 students

If you have achieved a pass or a compensated pass mark in all your modules you will be allowed to proceed.

If you have achieved a pass or a compensated pass in 105 credits you will be allowed to proceed into the next year and must re-take the assessment(s) for your failed module for a final time. This is called Proceed and Re-sit. If you don't pass the module at the last attempt you will not be able to complete your degree.

If you have achieved a pass or a compensated pass in 75 credits you will not be allowed to progress but will be awarded a repeat year. This is an opportunity to study the first year again as if for the first time. You would do all the study and submit all the assessments again. You can typically only repeat the year once on this basis.

If you have not achieved a pass or a compensated pass in 75 credits your studies would be terminated and you cannot proceed.

If you have not met the requirements to progress but have accepted mitigating circumstances you may be awarded a repeat year. You will not be able to progress to the next level of your studies until you have met the thresholds set out above.

Please note that it is your responsibility to ensure that your school is aware of your mitigating circumstances before the meeting of the Board of Examiners. If you have failed to disclose your mitigation at this point it cannot be guaranteed that this will be taken into account retrospectively.



Year 2 students and year 3 students on a four year course

If you have achieved a pass or a compensated pass mark in all your modules you will be allowed to proceed.

If you have achieved a pass or a compensated pass in 105 credits you will be allowed to proceed into the next year and must re-take the assessment(s) for your failed module for a final time. This is called **Proceed and Re-sit**. If you don't pass the module at the last attempt you will not be able to complete your degree.

If you had to re-sit a module from a previous year and fail to achieve a pass or compensated pass at the final attempt your studies would be terminated and you cannot proceed.

If you have not achieved a pass or a compensated pass in 105 credits your

studies would be terminated and you cannot proceed.

If you have not met the requirements to progress but have accepted mitigating circumstances you may be awarded a repeat year or a re-sit without residence. In a re-sit without residence you would re-take the assessments that you have failed but without returning to campus or re-taking the teaching. You would be placed in academic suspense.

Please note that it is your responsibility to ensure that your school is aware of your mitigating circumstances before the meeting of the Board of Examiners. If you have failed to disclose your mitigation by this point it cannot be guaranteed that this will be taken into account retrospectively.

For more information on progression requirements, please see **here**.

Award and classification

Classification

To be awarded your degree you must:

- a) Have achieved a Pass or Compensated Pass in all the modules on your course
- b) Have no more than the allowed amount of Compensated Pass
- c) Have met any course specific requirements

At the end of your programme your results will be reviewed by a Board of Examiners which will determine your award and classification. The classifications for honours degrees are 1st, 2:1, 2:2 or 3rd. The classification is calculated on the basis of your year

2 (level 5) and year 3 (level 6) marks if you are on a three year programme.

If you are on an Integrated Master programme, or have taken a year abroad or in industry which counts towards the classification, the classification is calculated on the basis of your year 2, 3 and 4 marks.

The credit weighted average (CWA) is calculated for each year/level first and then added together.

If you are on a three year degree programme the weighting between year 2 (level 5) and year 3 (level 6) is 33:67. If you are on a four year programme the weightings are slightly different see page 16.



Calculating credit weighted averages

A credit weighted average places greater emphasis upon modules which have a higher credit weighting. The marks for a 30 credit module would have twice the impact of those for a 15 credit module.

Here is an example of how a credit weighted average is calculated for a three year bachelors programme, where years 2 and 3 count towards the degree classification:

Year 2			Year 3		
modules	Credits	Contribution	modules	Credits	Contribution
65.00	15	65.00 * 15 = 975	56.00	15	56.00 * 15 = 840
67.00	15	67.00 * 15 = 1005	62.00	15	62.00 * 15 = 930
57.00	15	57.00 * 15 = 855	65.00	30	65.00 * 30 = 1950
64.00	30	64.00 * 30 = 1920	67.00	30	67.00 * 30 = 2010
63.00	15	63.00 * 15 = 945	77.00	15	77.00 * 15 = 1155
70.00	30	70.00 * 30 = 2100	72.00	15	72.00 * 15 = 1080
Total: 65.00			Total: 66.37		

All the contributions are added together and the total is divided by 120, which is the total for the year. That is then multiplied by the weighting of the year, as follows:

$$65.00 * 0.33 = 21.45$$

$$66.37 * 0.67 = 44.47$$

Finally, the two are added together to produce a final Credit Weighted Average as follows:

$$21.45 + 44.75 = 66.2\%$$

This final credit weighted average is expressed to two decimal places and not rounded up.

Classifying your degree

The thresholds for different classifications are absolute and there is no borderline category. The number of credits quoted are from years 2 and 3 of your degree. The Board of Examiners will confirm your degree classification in line with the scheme of assessment detailed below.

Bachelors (three year) programmes

First class honours (1st)	To be awarded a first you must have a credit weighted average of at least 70.00%. Alternatively, you will be awarded a first if you achieve at least 70.00% in 120 credits, of which 30 must be from level 6 (final year), and have a credit weighted average of at least 68.00%.
Upper second class honours (2:1)	To be awarded a 2:1 you must have a credit weighted average of at least 60.00%. Alternatively, you will be awarded a 2:1 if you achieve at least 60.00% in 120 credits, of which 30 must be from level 6 (final year), and have a credit weighted average of at least 58.00%.
Lower second class honours (2:2)	To be awarded a 2:2 you must have a credit weighted average of at least 50.00%. Alternatively, you will be awarded a 2:2 if you achieve at least 50.00% in 120 credits, of which 30 must be from level 6 (final year), and have a credit weighted average of at least 48.00%.
Third class honours (3rd)	To be awarded a third you must have a credit weighted average of at least 40.00%.

Four year degree programmes

The weighting between the years of your degree will depend on whether you are on a bachelors programme with an integrated year abroad or an Integrated Masters programme.

If you are on a four year bachelors programme with an integrated year abroad (i.e. where the year abroad contributes marks towards your classification) the weighting between years 2, 3 and 4 is 20:20:60.

If you are on an Integrated Masters programme (such as an MChem, MGeol, MBIol Sci etc) the weighting between years 2, 3 and 4 is 20:30:50.



Credit Weighted Averages for 4 year programmes are calculated in a similar way, but using marks from 3 years and having a different weighting between the years. In the following example for an Integrated Masters student the credit weighted average would be calculated as follows:

Year 2 modules			Year 3 modules			Year 4 modules		
Credits	Contribution		Credits	Contribution		Credits	Contribution	
65.00	15	65.00*15 = 975	56.00	15	56.00*15 = 840	67.00	30	67.00*30 = 2010
67.00	15	67.00*15 = 1005	62.00	15	62.00*15 = 930	74.00	30	74.00*30 = 2220
57.00	15	57.00*15 = 855	65.00	30	65.00*30 = 1950	78.00	30	78.00*30 = 2340
64.00	30	64.00*30 = 1920	67.00	30	67.00*30 = 2010	72.00	30	72.00*30 = 2160
63.00	15	63.00*15 = 945	77.00	15	77.00*15 = 1155			
70.00	30	70.00*30 = 2100	72.00	15	72.00*15 = 1080			
Total: 65.00			Total: 66.37			Total: 72.75		

All the contributions are added together and the total is divided by 120, which is the total for the year. That is then multiplied by the weighting of the year, as follows:

$$65.00 * 0.20 = 13.0$$

$$66.37 * 0.30 = 19.91$$

$$72.75 * .50 = 36.37$$

Finally, the two are added together to produce a final Credit Weighted Average as follows:

$$13.0 + 19.91 + 36.37 = \mathbf{69.28}$$

This final credit weighted average is expressed to two decimal places and not rounded up

Four year programmes

The thresholds for different classifications are absolute and there is no borderline category. The number of credits quoted are from the qualifying years of your degree: Years 2, 3 and 4 for Integrated Masters or Years 2 and 4 for Bachelors degrees with a year in industry or abroad.

First class honours (1st)	To be awarded a first you must have a credit weighted average of at least 70.00%. Alternatively, you will be awarded a first if you achieve at least 70.00% in 180 credits, of which 30 must be from level 6 (final year), and have a credit weighted average of at least 68.00%.
Upper second class honours (2:1)	To be awarded a 2:1 you must have a credit weighted average of at least 60.00%. Alternatively, you will be awarded a 2:1 if you achieve at least 60.00% in 180 credits, of which 30 must be from level 6 (final year), and have a credit weighted average of at least 58.00%.
Lower second class honours (2:2)	To be awarded a 2:2 you must have a credit weighted average of at least 50.00%. Alternatively, you will be awarded a first if you achieve at least 50.00% in 180 credits, of which 30 must be from level 6 (final year), and have a credit weighted average of at least 48.00%.
Third class honours (3rd)	To be awarded a third you must have a credit weighted average of at least 40%. This classification is not available on Integrated Masters programmes.





UNIVERSITY OF
LEICESTER

www.le.ac.uk

University of Leicester

University Road
Leicester, LE1 7RH, UK

t: +44 (0)116 252 2605/2537

e: qualoffice@le.ac.uk

w: www.le.ac.uk



[/uniofleicester](https://www.facebook.com/uniofleicester)



[uniofleicester](https://www.instagram.com/uniofleicester)



[@uniofleicester](https://twitter.com/uniofleicester)