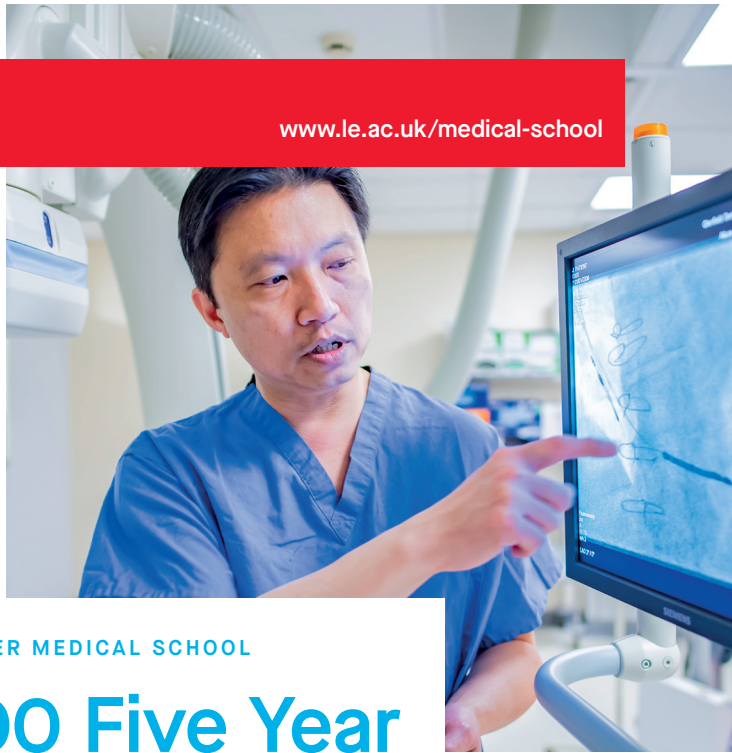




UNIVERSITY OF
LEICESTER

www.le.ac.uk/medical-school



LEICESTER MEDICAL SCHOOL

A100 Five Year MBChB

**Frequently asked questions
(2025 Entry)**



Entry requirements



Entry requirements

Q: What are your academic entry requirements?

A: We accept a variety of qualifications. For those with predicted or achieved A levels we require A*AA in Chemistry OR Biology and one other science from: Chemistry, Biology, Physics, Maths or Psychology. We will consider AAA (including 2 sciences as above) and an EPQ grade B.

We require English Language, Maths and Double Science or Chemistry and Biology GCSEs at grade B (6).

Full entry requirements can be found on our website:

le.ac.uk/study/medicine/entry-requirements

Q Do you require UCAT or BMAT?

A: We are part of the UCAT consortium and require all applicants to complete UCAT in the year of application.

Q: Does having a 4th A/AS level or EPQ improve my chances?

A: In general no as our requirement is three A levels. However, if you are in a borderline group pre or post interview this may count in your favour. It will alter your offer though.

Q: Do you make contextual offers?

A: If you have completed a Realising Opportunities Programme, or one of the UKWPMED progression programmes (including Access Medicine Leicester) then you would be made an alternative offer if you got to that stage. AAA with ROP. ABB with UKWPMED.

Q: What if I miss my offer on results day?

A: We only consider A level resits in exceptional circumstances. The admissions team would need to approve this before you applied.

Selection for interview

Q: How do you score applications?

A: We score applications based on your academic achievements as well as your UCAT score. 50% of the marks will be for academic achievement and 50% for your UCAT score.

For an up to date scoring document please visit our website:

le.ac.uk/study/medicine/applying

Q: What was the score required last year to get an interview?

A: The scores required for interview vary each year due to a number of factors. There is no pre-determined score. Admissions statistics can be found on our website:

le.ac.uk/study/medicine/applying

NB The scoring changed significantly for 2024 entry.

“We score applications based on your academic achievements as well as your UCAT score.”

Q: Do you have a cut off for the UCAT?

A: We do not have a cut off as the scores vary each year, but your UCAT result contributes 50% to our scoring system in selecting for Interviews. However, you should be aware that our formula for scoring UCAT caps the score for those in the bottom two deciles. In addition, we do not consider applicants with a Band 4 in the UCAT Situational Judgement Test. For an up-to-date scoring document please visit our website:

le.ac.uk/study/medicine/applying

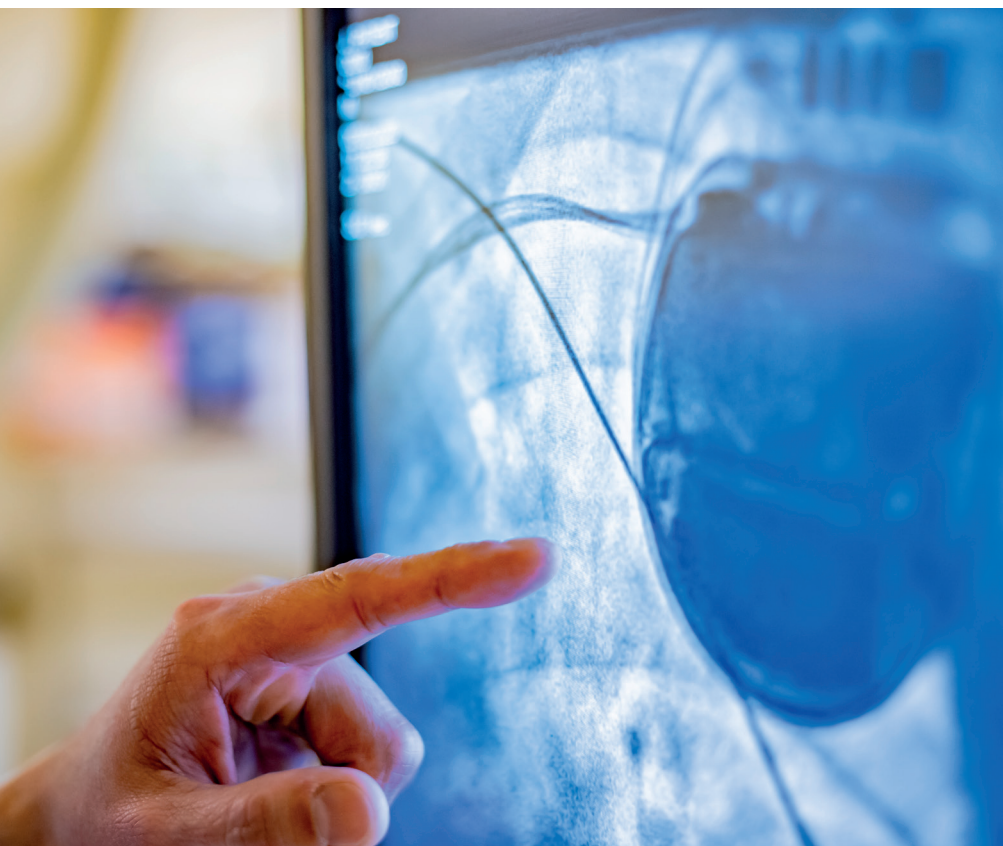


Q: Do you look at personal statements?

A: We do not routinely read personal statements as we do not use them to score applications. They may, however, be used in borderline or tie breaker situations. If used, we look for your ability to reflect on the experiences you have gained. We do read them at offer stage.

Q. Do you have a minimum work experience requirement?

A: We do not have a minimum and think that many life experiences offer personal and professional development opportunities that are relevant for a medical career. We are more interested in what you have learnt from your experiences i.e. your ability to reflect.





Interviews and decisions

Q: What is your style of interview?

A: Our interviews use the Multiple Mini-Interview (MMI) style, and consist of individual mini-interviews or ‘stations’ which can assess your:

- Verbal communication
- Listening
- Compassion, respect and dignity
- Emotional intelligence
- Problem solving
- Motivation
- Ethical judgment
- Numeracy

Q: When are interviews?

A: Interviews are planned for December, January and February. Dates are released via our website nearer the time.

Q: When will I hear if I have got an interview/offer?

A: Steps 1-6 in the timeline on the following page will help to give you an idea of what is likely to happen to your applications at different stages in the cycle.

Q: What should I wear for my interview?

A: We would suggest you wear a smart shirt and trousers or skirt. You do not need to wear a suit, nor a tie.

Q: How can I prepare for my interview?

A: We do not think there is any need to attend courses. We would suggest practising answering questions relating to your personal statement and current topical developments; and thinking about the values and personal qualities stated in the NHS Constitution.

**We are Citizens
of Change**

**We are Citizens
of Change**



We are Citizens

Timeline

1. Open days

Join us in person and chat with staff and current medical students about their experience here at Leicester!

www.le.ac.uk/open-days

2. UCAS medicine deadline (15 October)

Around 3,000 applications are received, sorted and scored. Applications are scored according to their categories.

- Predicted A levels or equivalent
- Achieved A levels or equivalent
- Graduate applicants
- Access to Medicine
- International

3. UCAT scores added (November)

UCAT scores are added to academic score. UCAT (Pearson Vue) releases test results early November.

4. Multi mini interviews (December – February)

Applications are ranked and top scorers start to receive interview invites to Multi Mini Interviews. Over 1,200 interviews are conducted generating over 500 individual station scores per day to verify and record.

5. Interview scores ranked (February – April)

Interview scores are ranked and top scoring applicants start receiving offers.

Whilst we aim to make decisions as soon as possible, we thoroughly review all aspects of each application before offer. We typically make over 500 offers, but some offers may be made later in the cycle, as we wait to see how offers convert to firm acceptances.

The number of students that medical schools can enrol is tightly regulated by the Government. To ensure we don't inadvertently exceed our numbers we wait to see the conversion rate of those accepting us as firm and make more offers if we can. That means some applicants get late offers.

6. Visit days (April – May)

Offer holders have the opportunity to visit the campus and experience taster lectures, group work, and hopefully visit the dissection room.



General queries

Q: How many places do you have?

A: We have 290 places, including 18 for international applicants and about 35 for students progressing from our foundation year.

Q: Do you accept A level resits?

A: Only if there are significant mitigating circumstances that are pre-approved by our mitigating circumstances panel.

Q: Do you consider deferred applications?

A: Absolutely, unless you are a graduate applicant. Applicants applying for deferred entry are not treated any differently. We prefer to know sooner than later. We have a deadline for requests of 1 April 2025. This is

because of our number cap and need to get our offer numbers correct.

Q: Will applying for mitigation harm/hinder my application?

A: Not at all.

But please note we do not accept mitigation for results below our minimum. We may consider bonus points for GCSE results. We may agree to consider A level resits.

If you have submitted all your evidence before our deadlines the admissions tutors will have communicated their decision to you in advance.

Please note that the acceptance of mitigation is not a guarantee of reaching the interview stage.

Q: I have mitigating circumstances, how do I inform you of this?

A: If you have any mitigating circumstances you would like us to consider then you need to email us at **medadmis@le.ac.uk** preferably including your UCAS number. Please note we will not accept academic results below our minimum even with mitigation. Resits will need to be undertaken.

Mitigation must be submitted by 1st October. If you submit your mitigation by 1st September then you will receive a decision by an Admissions Tutor before the UCAS Deadline. However, if you submit your mitigation after 1st September we will be unable to provide you with a decision before the UCAS deadline i.e. you will not know whether we have accepted it or not.

Each mitigating circumstances submission is subject to the discretion of an Admissions Tutor and/or Admissions Group, therefore an immediate decision cannot be given over the phone.

Q: I have a health condition/specific learning condition (eg dyslexia), will it have an impact if I declare this on my UCAS form?

A: When it comes to scoring and selection for interview absolutely not. If you are invited to interview we will ask for evidence so that we can ensure you have the right support/adjustments at interview. If you have a health

condition and are subsequently made an offer, although all offers are subject to a satisfactory Occupational Health screen, you may be asked to have a formal Occupational Health assessment to ensure that you can meet the outcomes of the course and to assess any support or adjustments you may need (please see the HEOPS website www.heops.org.uk/guide.php).





Course queries

Q: Do you offer full cadaveric dissection?

A: Yes we do. We have a large dissection room that is fitted with many online learning tools eg Apple TVs. Each small group of 8-10 students has their own cadaver.

Q: Do you offer PBL learning

A: No, although we do have a lot of group work that is supervised by clinical teaching fellows and academics.

Q: What does a week look like?

A: Usually there will be a mixture of lectures and group work either in the morning or the afternoon; with sessions learning about clinical skills or dissection as well. There is plenty of time for individual learning.

Q What format do exams take?

A: We run formative and summative examinations. They take the form of Single Best Answer (SBA), Short Answer Questions (SAQs) and Objective Structured Clinical Exams (OSCEs).

Q: When will I receive my free iPad?

A: At induction.

Q: Do you offer the opportunity to intercalate?

A: We actively encourage either iBSc or iMSc (the latter can only occur after Year 3). You may also choose to intercalate at another institution.





UNIVERSITY OF
LEICESTER

www.le.ac.uk/medical-school

Leicester Medical School

University of Leicester
University Road
Leicester, LE1 7RH, UK

t: +44 (0)116 252 2969
e: med-admis@le.ac.uk
w: www.le.ac.uk/medical-school



[/uniofleicester](https://www.facebook.com/uniofleicester)



[uniofleicester](https://www.instagram.com/uniofleicester)



[@uniofleicester](https://twitter.com/uniofleicester)