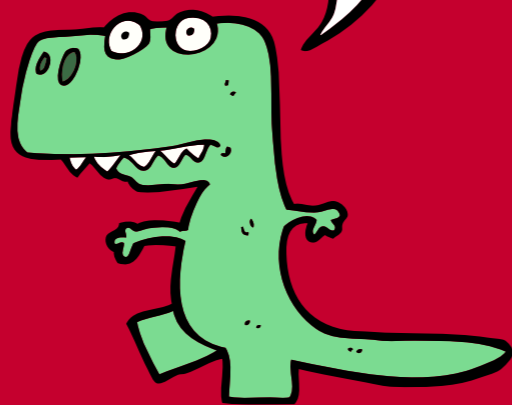
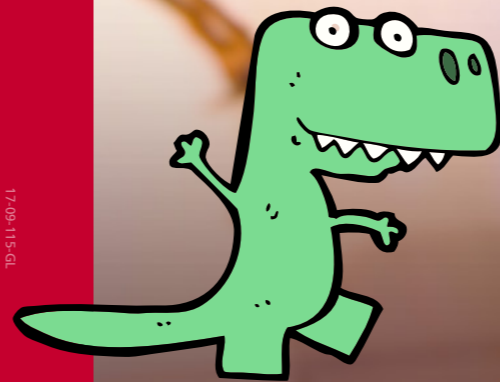


No one knows what
colour dinosaurs were.
Why not colour these in
how you think they might
have looked.



17/09/15/GC

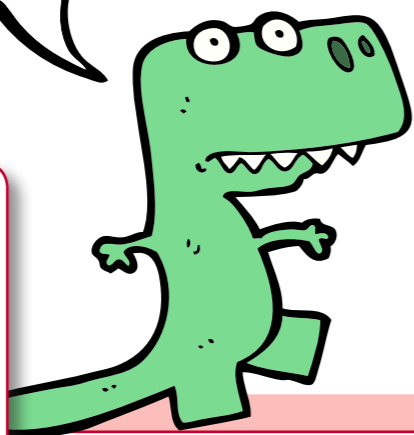
ACTIVITIES FOR 5-7 YEAR OLDS (KS1) MEETING 'JANE'



See how many questions you can answer!



Jane was a teenager – an adult T. rex would have been twice as big!



How many times does Jane appear in this booklet? Look carefully she might be hiding in some of the other pictures.



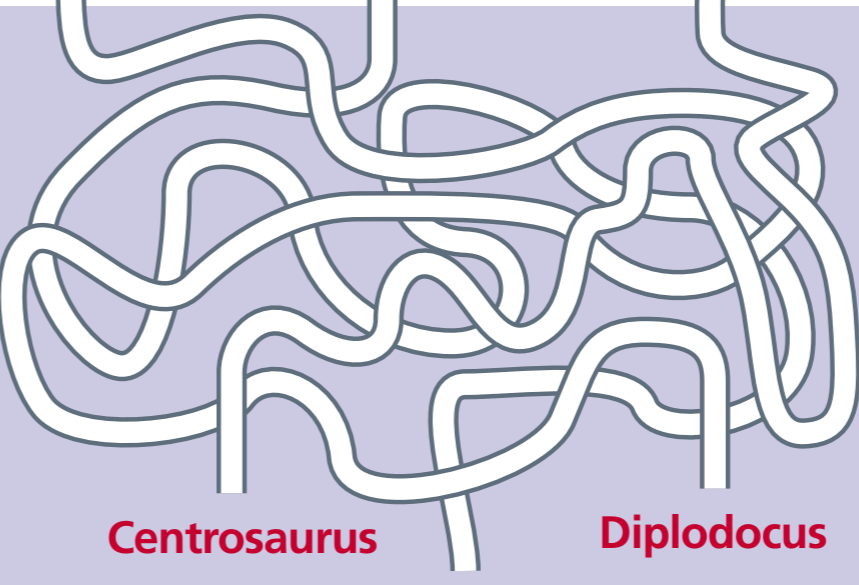
Look at Jane's teeth, what do you think she ate? (she was a carnivore)



There were many types of dinosaur.

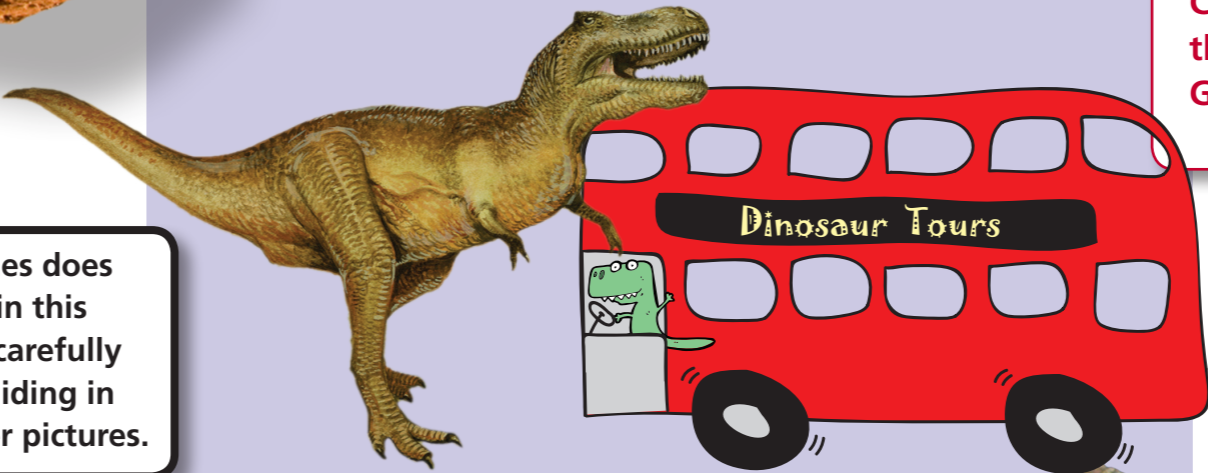


Which of these animals is most closely related to dinosaurs?



Centrosaurus Diplodocus
Dilophosaurus

Follow the lines to find out the names of these dinosaurs.



Jane is a Tyrannosaurus rex.

She lived about 66 million years ago – how old are you?

It was much warmer when she lived in a time called the Cretaceous – this is said "kret-ay-shus" – can you say that?

Did you know that dinosaurs laid eggs?

What other types of animal lays eggs? This may help you answer the question about which animal is most closely related to dinosaurs!

Collect your free Jane badge from the Bennett Building, Geology and Geography Reception!

